

special IPA |   



SUPER-FLASH

Super-Flash is a Development system for making industrial supervision (SCADA) and human-machine interfaces (HMI) applications. The applications made using Super-Flash can be limited

to monitoring the status of a plant or a machine, or it can go as far as including supervision and control functions, with the aim of "managing" production by means of a PC.

The advantages of Super-Flash

Reliable	Thanks to the WRunfile engine, the Super-Flash applications can count on a high level of safety and operating continuity.
Compatible	Super-Flash maintains its compatibility over time. It is always possible to update an application from an old to a new version without any problems.
Economical	Thanks to the Runtime sales formula, Super-Flash can be downloaded free of charge, directly from this site in the FreeDownload section.
Simple	Super-Flash is user-friendly even for those who do not know any programming languages.
Flexible	Super-Flash is versatile and suitable for creating applications for most industrial sectors and for highly specific spheres, such as home automation, building automation, infrastructures and services.
Powerful	Thanks to MicroC, the ingenious C language compiler included in the supervisor package, the already numerous potentials of Super-Flash go even further.

The Super-Flash sales proposal

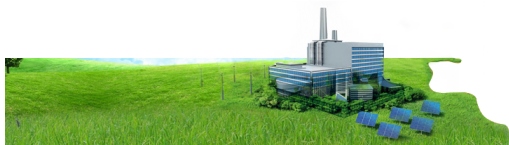
Automa proposes two complementary sales formulas for its SCADA HMI package: Runtime and Royalty-Free.

	Development System licence	Application licence
Reliable	at zero cost	on payment
Super-Flash Royalty-Free	on payment	at zero cost

With Super-Flash Runtime, the development system is completely free of charge: you only buy the Runtime licences whose cost depends on the size, i.e. on the maximum number of variables and alarms. The product can be downloaded directly from this site on the FreeDownload page and you can start to use it. A Runtime

licence, free of charge, will allow you to launch the application made in order to check its operation, for a maximum time of 15 minutes. Following its development, to be able to install the application at the end customer's premises, it will be necessary to purchase a Runtime licence represented by a hardware or software





special IPA | 



key, sized (number of variables and alarms) according to needs.

The MicroC Runtime compiler is included in the supply. You will therefore have two types of licence available, according to the tools used to create the application: Super-Flash licence or Super-Flash + MicroC licence.

The Runtime licences are provided with a protection device to be chosen among:

- Software activation Code
- USB key
- Key with 512 Mbyte, 1 Gbyte or 2 Gbyte Pen Drive


With Super-Flash ROYALTY-FREE you purchase a development system and there are no Royalties on individual applications. This choice foresees purchasing true "producer goods". The investment must be spread over a certain number of applications. Those who choose the ROYALTY-FREE formula purchase a specific version of the development system. It is possible to subscribe to an annual updating service which allows the customer to ensure they get the new versions issued by Automa. The Super-Flash ROYALTY-FREE licences also include MicroC, the C language compiler, which extends the potential of the Development system by 360°, and they are supplied with different costs depending on the size, i.e. on the maximum number of variables and alarms which can

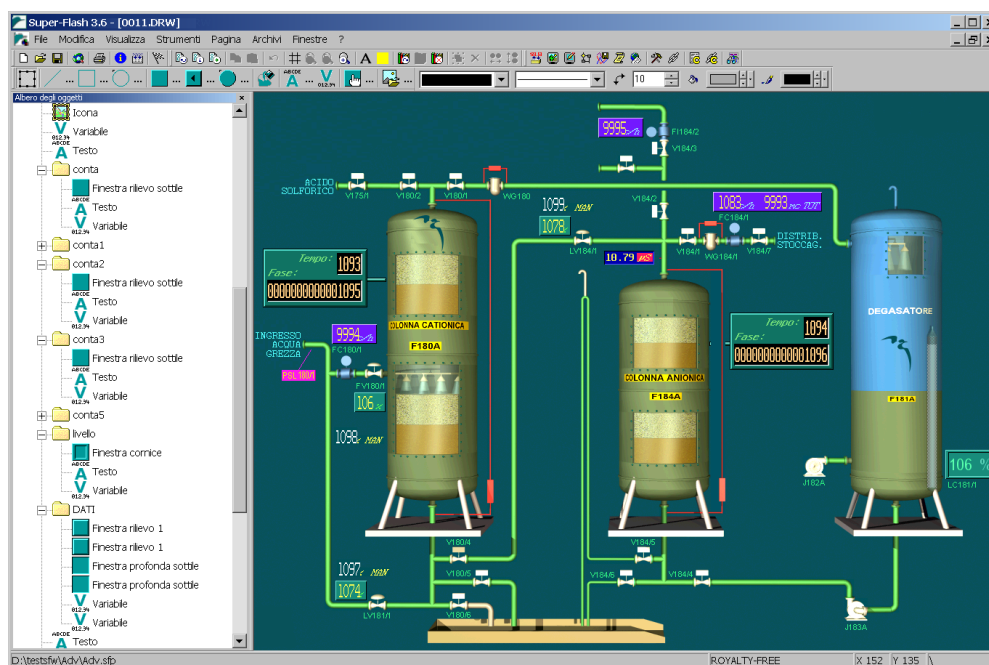
be managed. The licences are provided with a USB protection device which also incorporates a 2 GByte Pen Drive.

Super-Flash 4.2

Starting from October 2012 the latest version of Automa's SCADA Super-Flash 4.2 is available.

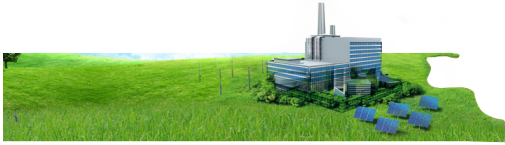
New functionalities are:

- Unicode support for the development of applications (mono and multilingual) in East Asian languages
- Optimization of alarms management database (fewer single variables needed by using block variables)
- Multi-monitor support: single extended desktop or dualview mode
- Extended characteristics for variables (built-in drivers and Link Drivers addressing)
- Optimization of ethernet communication management (higher speed and improved errors control)
- New 2.0 Trend engine 



FOOD
processing





special IPA |   



Technical characteristics

Description	Super-Flash is a guided environment for making human-machine interface (HMI) and supervision (SCADA) applications. It is fitted with a rich set of communication Drivers, which allow dialogue with the peripherals towards the field (PLC, regulators, CNC, etc.). It also offers the possibility of integrating your own application inside the company information system, thanks to its ability to effectively exchange information with the databases, dealing with all aspects of communication: connection (with the SmartDB product), synchronisation (with the Event Management module integrated in Super-Flash) and data structuring to find the information the customer wants and make it available (for example with WAM, a web application for displaying the historical and real time alarms).
Characteristics	<ul style="list-style-type: none"> ■ Multi-platform: the applications run on Windows XP/E, Windows XP, Windows 7 32/64 bit and Linux (under Wine) ■ Multilingual: the development system is available in Italian, English and German, whereas the applications can be managed using 50 different dictionaries with the possibility of changing the runtime language ■ Rich in Drivers: it is provided with a very large number of communication drivers ■ Open-ended: it can easily be integrated both towards the field and towards the company information systems ■ Estendibile: with MicroC, the product application possibilities open up at 360 degrees ■ Complete: it manages alarms, trends and recipes ■ Large capacity: 30,000 Variables, 30,000 Alarms, 10,000 graphic pages, etc..
Minimum Requirements	<ul style="list-style-type: none"> ■ Operating System: Windows XP Professional SP3 con Internet Explorer 7 ■ Processor: Pentium 4 \ Athlon ■ System memory: 512 Mbyte ■ Space required on disk: 90 Mbyte ■ Graphic card resolution: 1024 x 768 64K colours ■ Ports: parallel or USB ■ Other Peripherals: CD-ROM
Product contents	<p>The package provided, available on CD or downloadable from the Automa site, contains:</p> <ul style="list-style-type: none"> ■ DEVELOPMENT SYSTEM: Super-Flash 4.2 in Italian, English and German ■ COMPILER: MicroC with technical Manual in Italian and English (English manual is updated up to Super-Flash 3.8) ■ DEMO: demonstration applications ■ DOCUMENTATION: "Introductory Guide" and "Information Brochure" in Italian and English, "What's new" and "Bugs fixed" in Italian, first draft of the "Super-Flash Manuals - May 2004" in Italian, SUPER-FLASH 3.2 Manuals in English ■ PROGRAMMES AND MicroC DRIVER: some programmes and communication drivers developed using the MicroC compiler ■ LINK DRIVER: a collection of Runtime version Link Drivers (i.e. DLL drivers) currently available

FOOD
processing

